



*Jumru*

**Jumru**®



---

## Table of Contents

Measuring .....	2
Measuring Thickness.....	2
Hygrometer.....	3
Speed Measuring .....	5
Time Measuring.....	7
Tensionmeter.....	9
Counting .....	12
Thread counter .....	12
Meter Counter.....	13
Stroke Counter .....	14
Piece Counter.....	15
Weighting.....	16
Testing .....	17
Divers.....	19

## Measuring / Measuring Thickness

### Measurer of thickness

Model: 3961



### Measurer of thickness DMD 820 V

Model: 3962

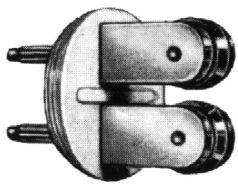


Measuring / Hygrometer



Electrode Socket

Model: 9845



Grooved Roller Electrode

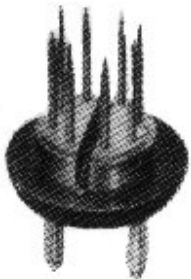
Model: 9869

Only in connection with special cable 9846 and universal electrode socket 9845.



Measuring cable

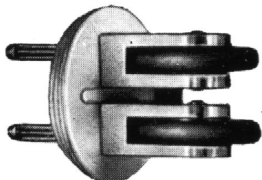
Model: 9846



Point Electrode

Model: 9841

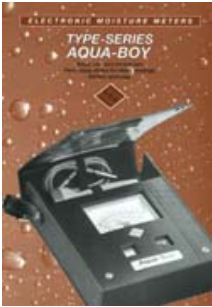
Only in connection with special cable 9846 and universal electrode socket 9845.



Roller Electrode

Model: 9868

Only in connection with special cable 9846 and universal electrode socket 9845.



### Textile Hygrometer

Model: 9840

Technical datas:

- Deviation of moisture indication  $\pm 0.2$  % Electrical
- deviation  $\pm 0.1$  % relating to absolute dial value.
- Dimensions: approx. 170 x 115 x 50 mm
- Weight: approx. 400 g.

## Measuring / Speed Measuring

Articulating arm incl. mounting kit for Handstroboscope

Model: 4022/6

Belt bag with clip for Handstroboscope

Model: 4022/3

Li / Ion Battery Smart Pack for Handstroboscope

Model: 4022/5



Precision Tachometer

Model: 3991

Range from:

40 to 50,000 t.p.m. and from 4 to 5,000 m.p.m. to be set into

the following steps: 40 to 500 t.p.m. and from 4 to 50 m.p.m. 400 to 5,000

t.p.m. and from 40 to 500 m.p.m. 4,000 to 50,000 t.p.m. and from 400 to 5,000 m.p.m. In handy box 85 x 155 x

45 mm, with 1 rubber point, rubber bush, rubber funnel, wheel disk, and extension. Weight of approx. 580 g.

Replacement Xenon Lamp for Handstroboscope

Model: 4022/1

---

Spare parts Electronics for Handstroboscope

Model: 4022/7

Tripod, 3-way adjustable for Handstroboscope

Model: 4022/4

Worldwide charger set (100-230V) for Handstroboscope

Model: 4022/2

## Measuring / Time Measuring



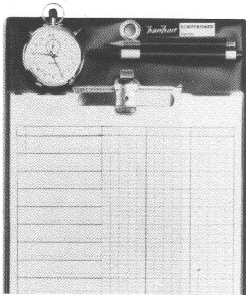
Double Stop Watch of high precision

Model: 3992



Robotimer

Model: 3994



Scriptboard

Model: 3977





#### Special stop watch

Model: 3999

Special stop watch with high precision by direct stopping of a push-button, good readable LCD-display, sturdy housing (82 x 61 x 28 mm) with protection bag.

Special technical data:

- Measuring up to 99999,99 min,
- 3 single-time-stores,
- store for total time



#### table stop clock

Model: 3975

## Measuring / Tensionmeter



Tension Meter DXB

Model: 9838/1

Price upon request !



Tension Meter DXF

Model: 9837/1

Price upon request !



Tension meter electronic ETM

Model: 9857/1

Price upon request !



Tension meter electronic DTMB

Model: 9852/1

Price upon request !



Tension meter electronic DTMX

Model: 9851/1

Price upon request !



Tension meter for staple fibres techniques DTFX

Model: 9853/1

Price upon request !



Tension meter industrial DN1

Model: 9839/1

Price upon request !



Tension meter industrial DX2

Model: 9835



Yarn tension meter ZF2

Model: 9832/12

**Yarn Tension Meter DXE**Model: 9836/1**Yarn tension meter ZD2**Model: 9833/10

Price upon request !

**Yarn tension meter Zivy**Model: 9830/10

Price upon request !

## Counting / Thread counter



Thread Counter

Model: 9015



Thread counter

Model: 9019



Upright magnifier

Model: 9014



Upright magnifier

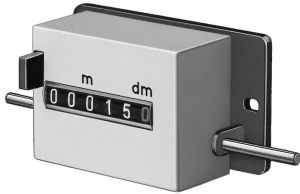
Model: 9569

## Counting / Meter Counter



Cloth Meter Counter

Model: 2403



Meter Counter

Model: 2399

## Counting / Stroke Counter



Stroke counter

Model: 2267



Stroke Counter

Model: 2269

## Counting / Piece Counter



Piece Counter

Model: 2394



Piece Counter

Model: 2272



Piece Counter

Model: 2394/2



Piece Counter

Model: 2394/1



## Weighting



Balança Sartorius TE212

Model: 9811

Built-in application programs: Net-total formulation, weighing in percent, counting, mass unit conversion by toggling, dynamic weighing.

\_\_\_\_\_

Balance BS945-15

Model: 9806



Cutting blades

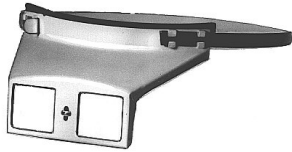
Model: 9815/2



Sample cutter

Model: 9815

Testing



Binocular head magnifier of metal

Model: 9561

Magnifying glass without lenses!!!!

\_\_\_\_\_



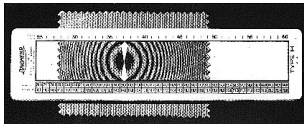
Lens to Binocular head magnifier of metal

Model: 9561/1



Luminous magnifier

Model: 9595



Lunometer

Model: 9025/1



Magnifier pocket type

Model: 9016



Magnifier with scale

Model: 9596



Magnifying Glass

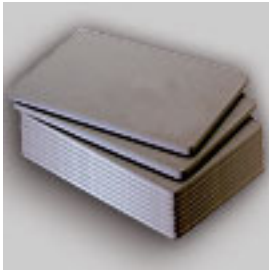
Model: 9556



Special magnifying glass

Model: 9026

## Divers



Cutting Pads

Model: 9816/1

