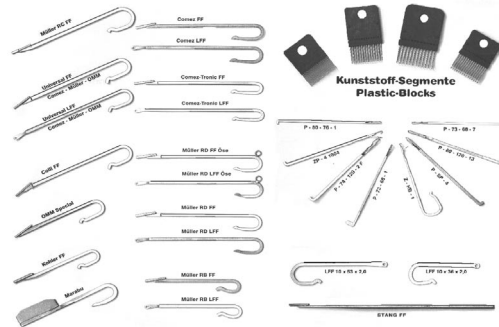




Accessories for crocheting machines



9108 JOMRO Needle Oil

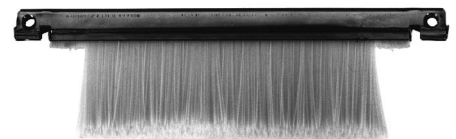
Oil of high quality, especially for the lubrication of needles and sinkers of knitting machines.

- washable
- clear as water
- extremely fluent
- free of resins
- protecting against rust
- protecting against wear and tear

Protecting against the results (overload) of higher speeds and accelerations in the needle and sinker tricks of up-to-date knitting machinery.

Article-No.	Type	Size mm	Colour	suitable for
2129/2	S	120/100x30	white	Stoll 220
2130	S	80x41	black	Universal MC-740
2131	D	43x26	nature	Diamant FRJ 5480/5
3278/1	S	80x34	white	Universal DUJA , MC 410 - MC 610, Schaffhauser DOFU
3279/2	D	54x28	white	Schaffhauser GDN
3282/1	D	75x35	black	Schaffhauser DJFU
3285	S	8x120x35	white	Stoll CNCA-3 KT, CNCA-3B
3286/1	S	60x33	white	Stoll CNCA-3 IM
3286/2	S	60x30	white	Stoll CNCA-3 IM, CNCA-3 KT
3287	S	85x120x35	white	Stoll CNCA-3 B
3288		130x41	black	Universal MC 642,MC643
3289	S	120x34	black	Universal MC 640
3291	D	80x28	black	Universal MC 611
3292	S	120x32	black	Steiger

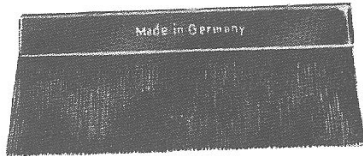
Brushes for Flat Knitting Machines



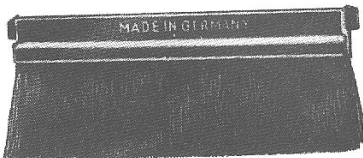
2129/2



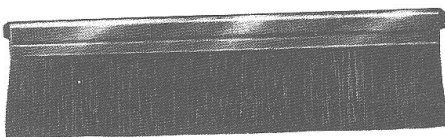
2128



2104-2110,3279



2111-2115, 3278



2116-2117

Article-No.	Type*	Size mm	Colour	suitable for
2104/2	D	40x25	white	
2108/1	D	60x25	black	
2108/2	D	60x25	white	Universal Supramat A+B Perfekta S+D Superior R+D Record, Spezial, Transrapit
2109/1	D	60x25	black	
2109/2	D	60x28	white	
2110/1	D	60x30	black	
2110/2	D	60x30	white	
2111/1	S	60x25	black	
2111/2	S	60x25	white	
2112/1	S	60x28	black	Alemannia F8, Singer-A Bentley A, Universal MCI,MCU
2112/2	S	60x28	white	Universal MCI MCII, MCZ
2113/1	S	60x30	black	Stoll AJUM, IBOM/b KZR E 10, ANV 31325 ANVH
2113/2	S	60x30	white extra fine	Stoll AJUM, IBOM/b, KZR E 12/14
2113/3	S	60x30	grey/hardmell iert	Stoll AJUM, IBOM/b, KZR E 4/8, ANVH-B-ES
2115/1	S	80x28	black	
2115/2	S	80x28	white	
2115a/1	S	80x30	black	
2115a/2	S	80x30	white	
2116/2	S	100x25	white	
2117a/1	S	100x30	black	
2117a/2	S	100x30	light	Stoll CMS
2120	S	60x30	black	Shima-Seiki EHH-60301 brush not stepped
2120/1	D	50x25	light	Shimo-Seiki EHH-5025
2120/2	D	50x30	light	Shima-Seiki EHH-5019
2120/3	D	50x19	black	Shima-Seiki EHH-5019
2122	S	80x35	white	Stoll CNCA 3KT
2122/1	S	120x38	white	Stoll DNVH-G
2122/2	S	80x30	mioced	Stoll ANVH 4-4 M
2122/3	S	110/35,5	white	Stoll CMS, swivel brush E4-8
2122/4	S	1000/29	white	Stoll CMS 400-402
2122/5	S	110/37	white	Stoll CMS 400-402
2122/6	S	120/37	white	Stoll CMS E 10-14 swivel brush
2122/7	D	60 x 30	grey, hard	ident no. 31324
2122/8	D	60 x 30	white	ident no. 71914
2122/9	S	80/120/35		ident no. 72498, without screw hole

*Types: D= single pressed, S= anchored bristles



Brushes for Circular Machines and Stocking Looms

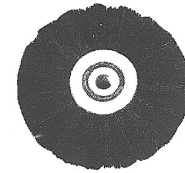
Article-No.	Brush-Type	Size mm	Type
3635	circular	18x30	with two-row bristles
3636	circular	18 x 40	with two row bristles
3637	circular	19x45	with two-row bristles
3645	circular	42 mm Ø	with metal core, type Wildt

Brushes are available as well in other sizes and types. In case of order or inquiries please indicate quantities and kind of bristles or send a sample.

Brushes for Circular Linking Machine

Article-No.	brush-type	Size mm	Type
3659	circular	55x80	three-row black bristles, hard

Brushes for Circular Linking Machines



3635/3636



3645



3659

Disc brakes for flat and circular knitting machines

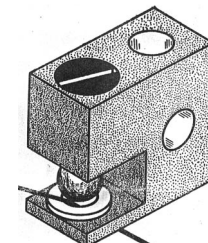
4131 Ball disc brake for textile machines like circular and flat knitting machines, stocking looms, linking machines and others.

Technical data:

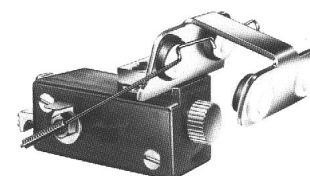
- dimensions: 30 x 30 x 15 mm
- 1 piece nylon ball
- adjusting knot catcher
- to be mounted on 8 mm horizontal and vertical round bar
- made from aluminium, antistatic

Special characteristics:

1. Free circulating nylon ball for constant yarn tension.
2. No further adjusting necessary, as the yarn tension will be regulated by the steady weight of the nylon ball.
3. The nylon ball cannot be lost but easily be replaced.
4. The function of the disc brake cannot be affected by flying fibres or fluff accumulation.
5. Simple and quick handling of the thread
6. Mounting to every single machine without problems.
7. Improvement of the quality of goods especially when producing delicate spun or textured yarns.
8. Constant yarn tension at all yarn supplies.



4131



3775

3775 Lower end detector, 24 Volt A/C, detecting 2 ends, feelers stopping individually. red alarm housing of plastic, eyelets of hard ceramic.